




1.0 Establishment of a coffee farm

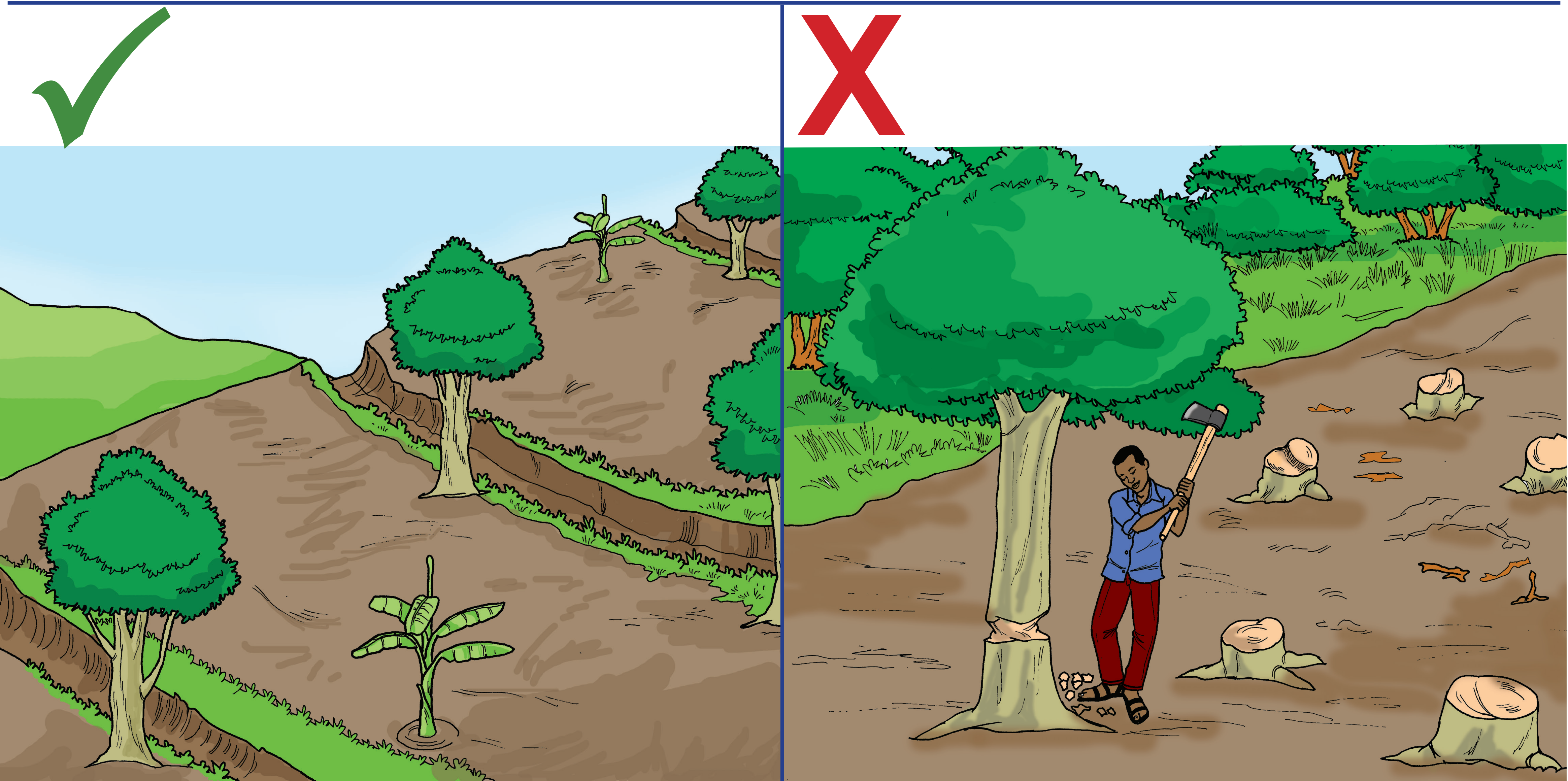
- 1.1 Uganda coffee growing zones
- 1.2 Preparing site for a coffee farm
- 1.3 Plant spacing
- 1.4 Hole preparation
- 1.5 Selecting planting materials
- 1.6 Planting coffee



[illegible]

- 100% ROBUSTA
- 100% ARABICA
- 50/50
- MOSTLY ROBUSTA
- MOSTLY ARABICA

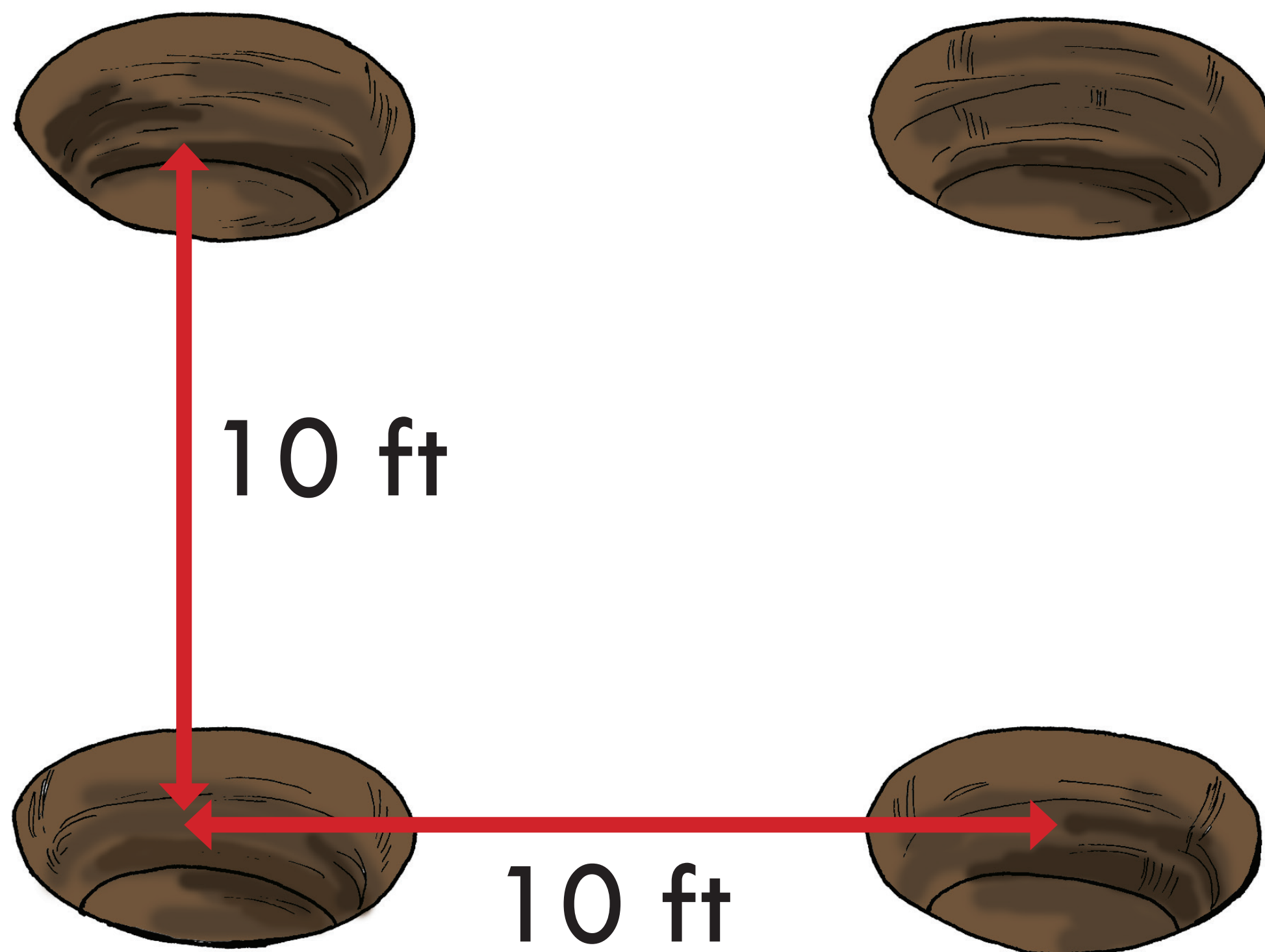
1.2 Preparing site for a coffee farm



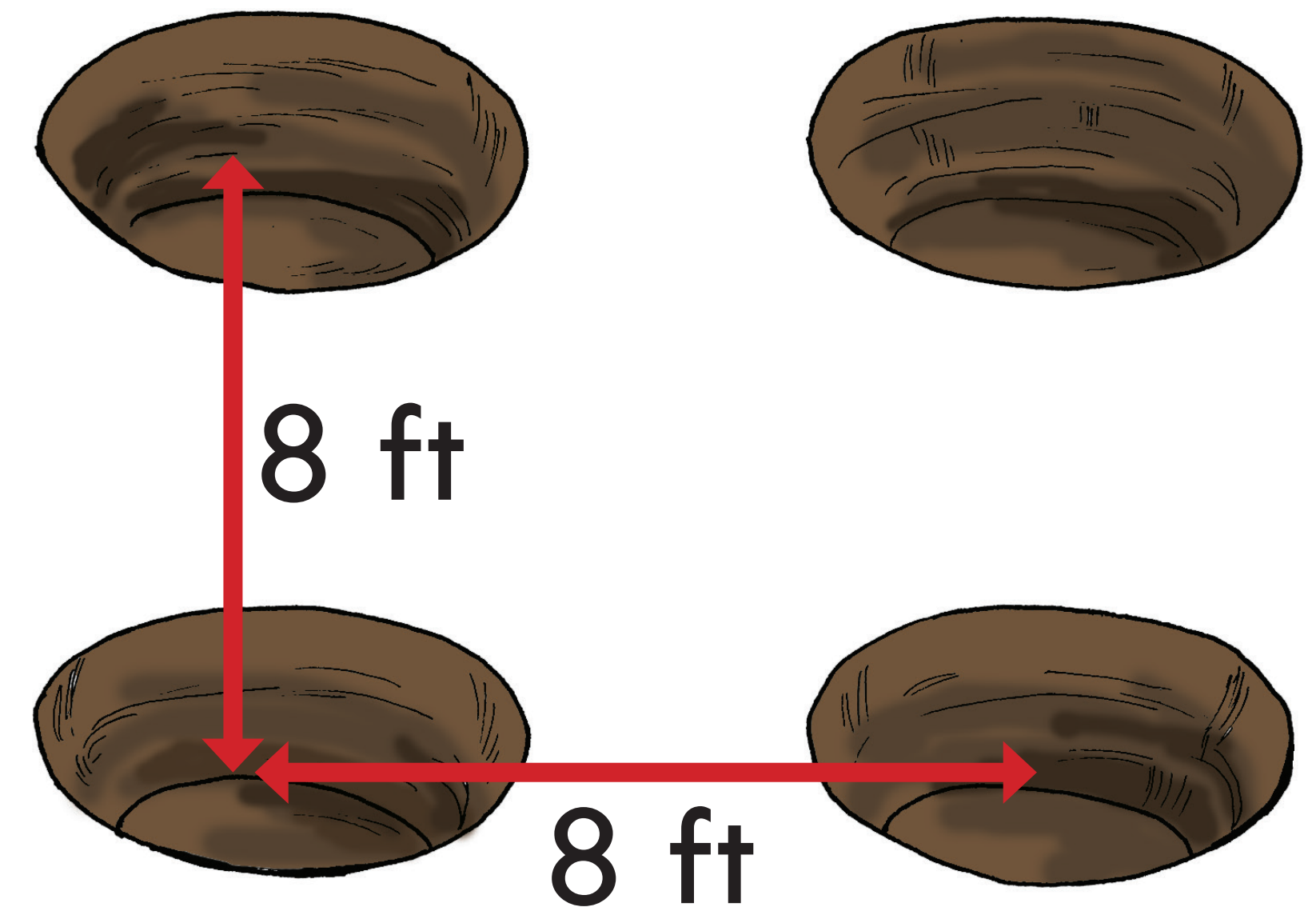
1. Prepare the land during dry season.
2. Remove excess trees and stumps. Leave some mature trees for shade.
3. Remove weeds by digging, hand picking perennial weeds or applying herbicides.
4. Build contour terraces, bands, grass strips and cut-off drains to prevent soil erosion.

1.3 Plant spacing

Robusta coffee



Arabica coffee

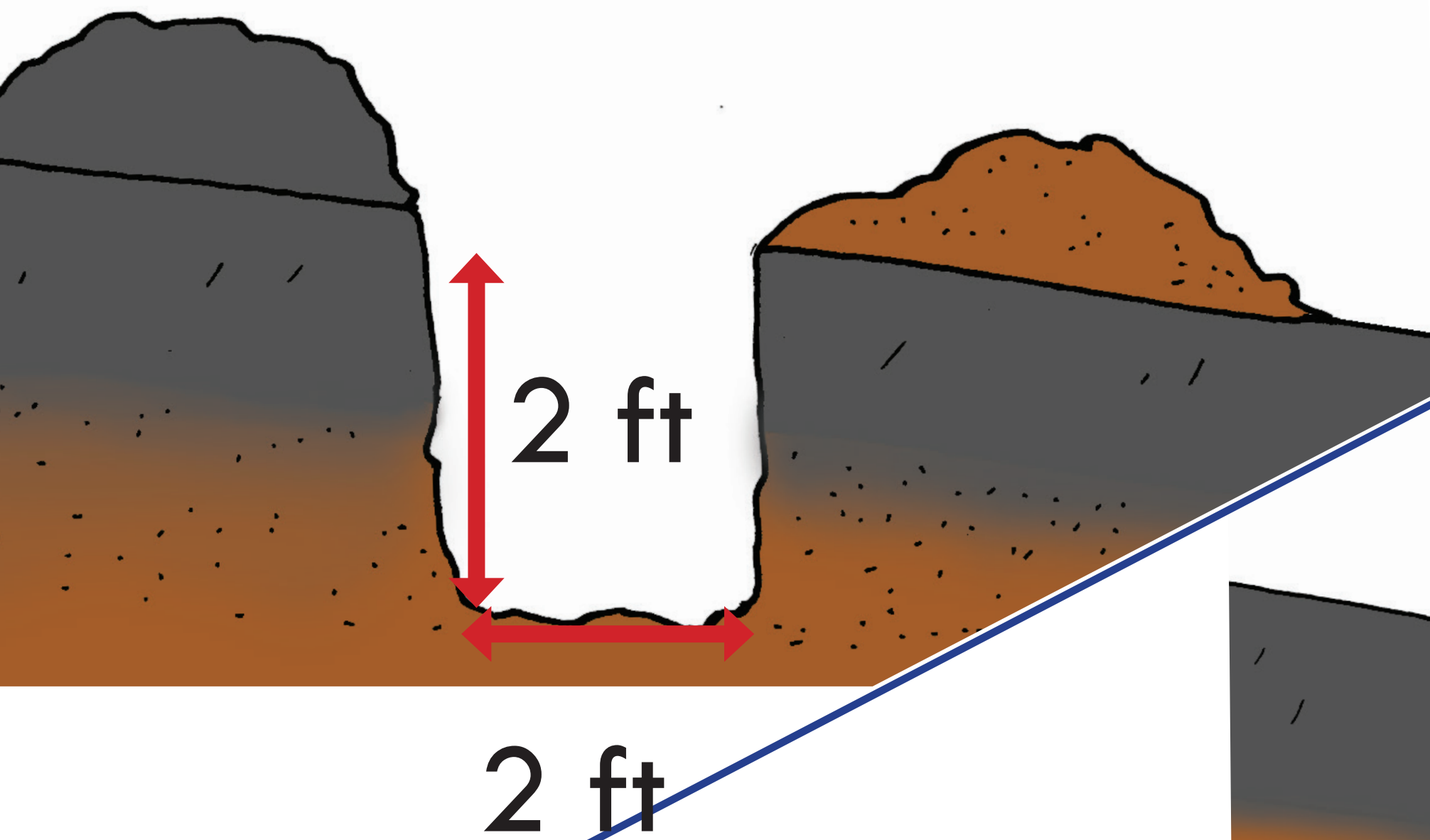


Marking field and digging holes for planting coffee

1. Plant Robusta coffee in lines at a spacing of 10ft x 10ft (450 trees per acre).
2. Plant Arabica coffee in lines at a spacing of 8ft x 8ft (680 trees per acre).

1.4 Hole preparation

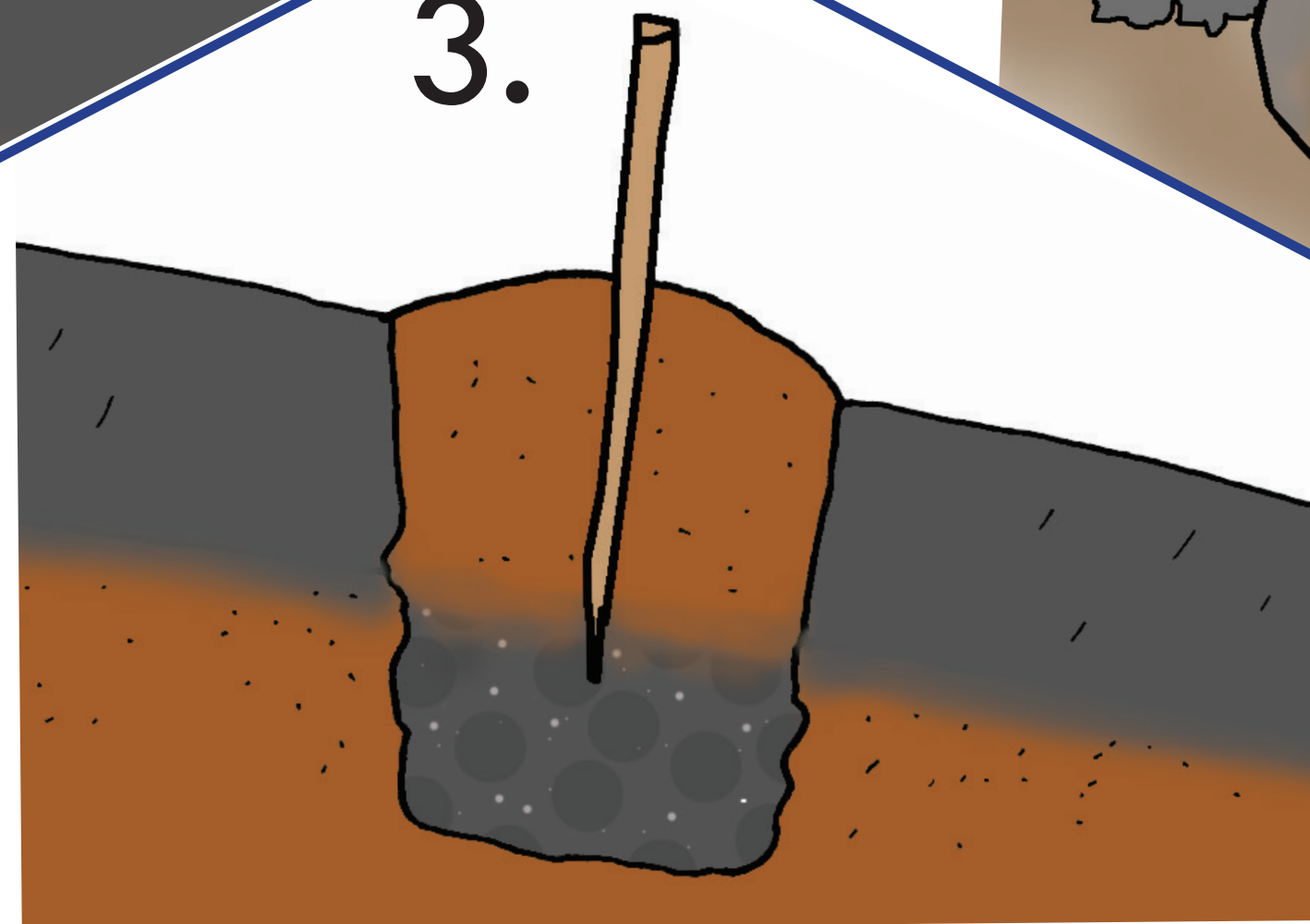
1.



2.



3.



Marking field and digging holes for planting coffee

1. Dig round holes.
2. Heap the fertile topsoil separate from the subsoil.
3. Refill the holes with topsoil mixed with a basin of manure and a handful of DAP or SSP fertilizer.
4. Heap the soil above the ground level to allow for sinking when the soil settles.
5. Mark positions where the coffee plants will be planted with pegs.

1.5 Selecting planting materials



Selecting planting materials

1. Obtain all planting materials from a UCDA-certified source.
2. Farmers may raise their own seedlings using seeds or cuttings from a certified source.
3. Plant coffee seedlings with between 6-8 leaves.

1.6 Planting coffee

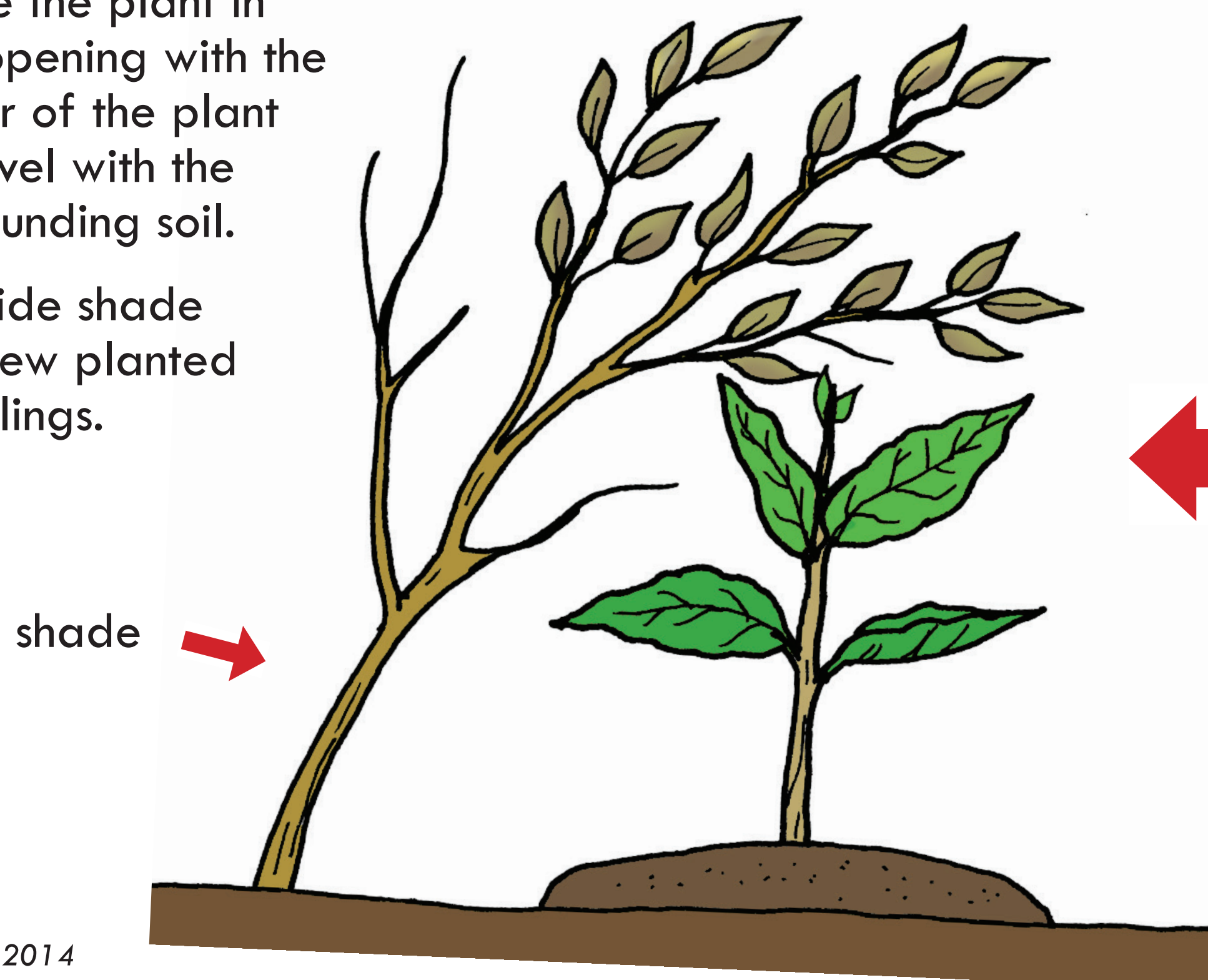
1. Plant 2-4 weeks after the onset of rains.



2. Trim off roots protruding beyond the polythene pots.
3. Remove polythene pots from potted plants before planting.



5. Place the plant in the opening with the collar of the plant at level with the surrounding soil.
6. Provide shade for new planted seedlings.



4. Open up the centre of the filled holes sufficiently to fit the size of the potted soil.
5. Add basin full of manure at planting.

